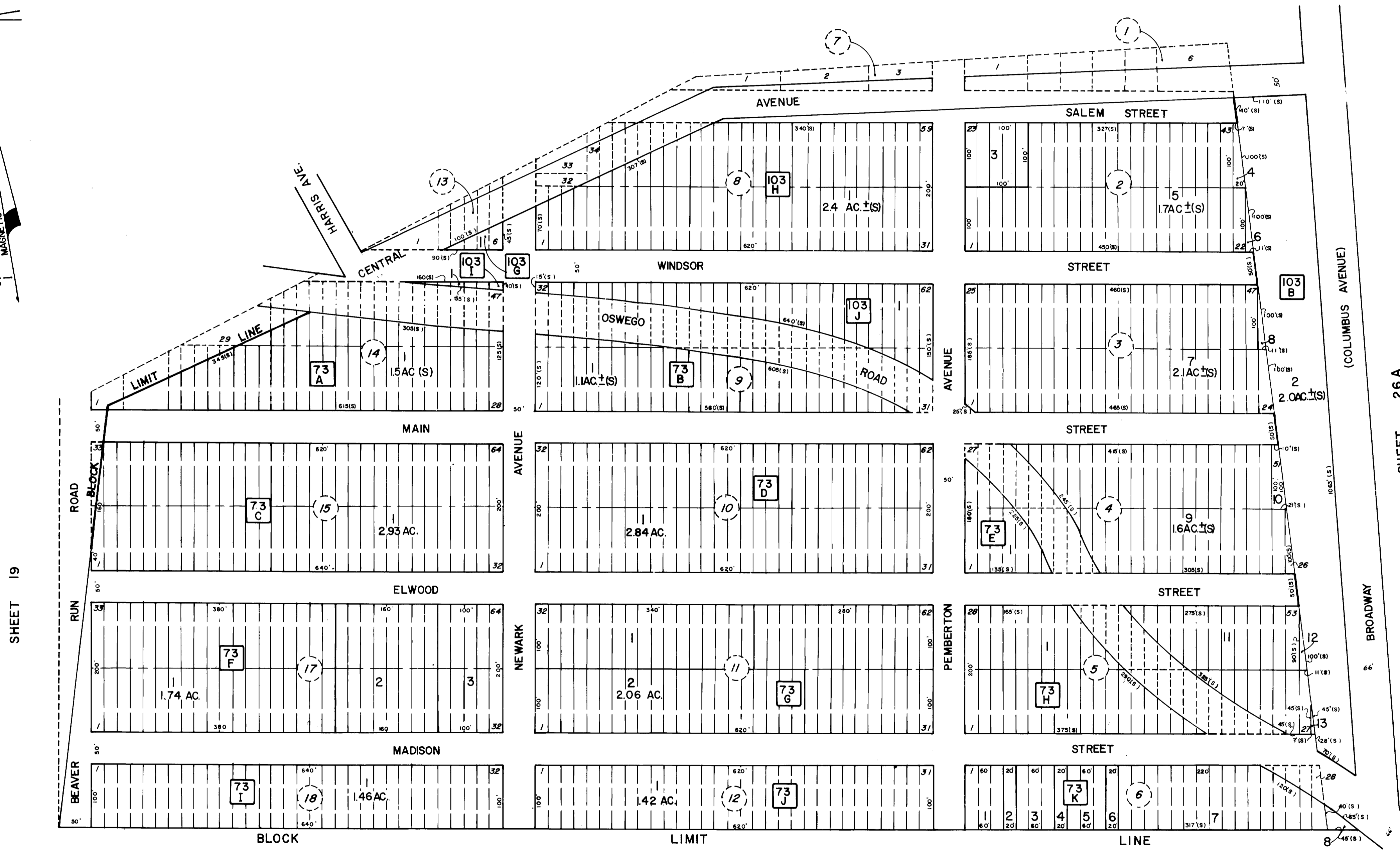


SHEET 26



SHEET 19

SHEET 19

SHEET 26 A

SHEET 26 A

NEW JERSEY DEPARTMENT OF THE TREASURY
DIVISION OF TAXATION
PUBLIC UTILITY TAX BUREAU
APPROVED AS A TAX MAP PURSUANT TO THE
PROVISIONS OF CHAPTER 175, LAWS OF 1913, ETC.
FOR THE DIRECTOR, DIVISION OF TAXATION
BY *J. H. Roman*
DATE OCT 16 1967 STATE SUPERVISOR SERIAL NO. 434

TAX MAP
TOWNSHIP OF BASS RIVER
BURLINGTON COUNTY, NEW JERSEY
SCALE 1" = 100' DEC. 1963
PREPARED BY
VAN NOTE - HARVEY ASSOCIATES
CONSULTING ENGINEERS & LAND SURVEYORS
234 NASSAU STREET
PRINCETON, NEW JERSEY

LEGEND
1 - BLOCK NUMBER (S) - SCALED DIMENSION
3 - PARCEL NUMBER (D) - DEED DIMENSION
2 - DEVELOPMENT LOT NUMBER
2 - DEVELOPMENT BLOCK NUMBER
NOTE: TO SHOW CONDITIONS AS OF OCTOBER 1, 1965