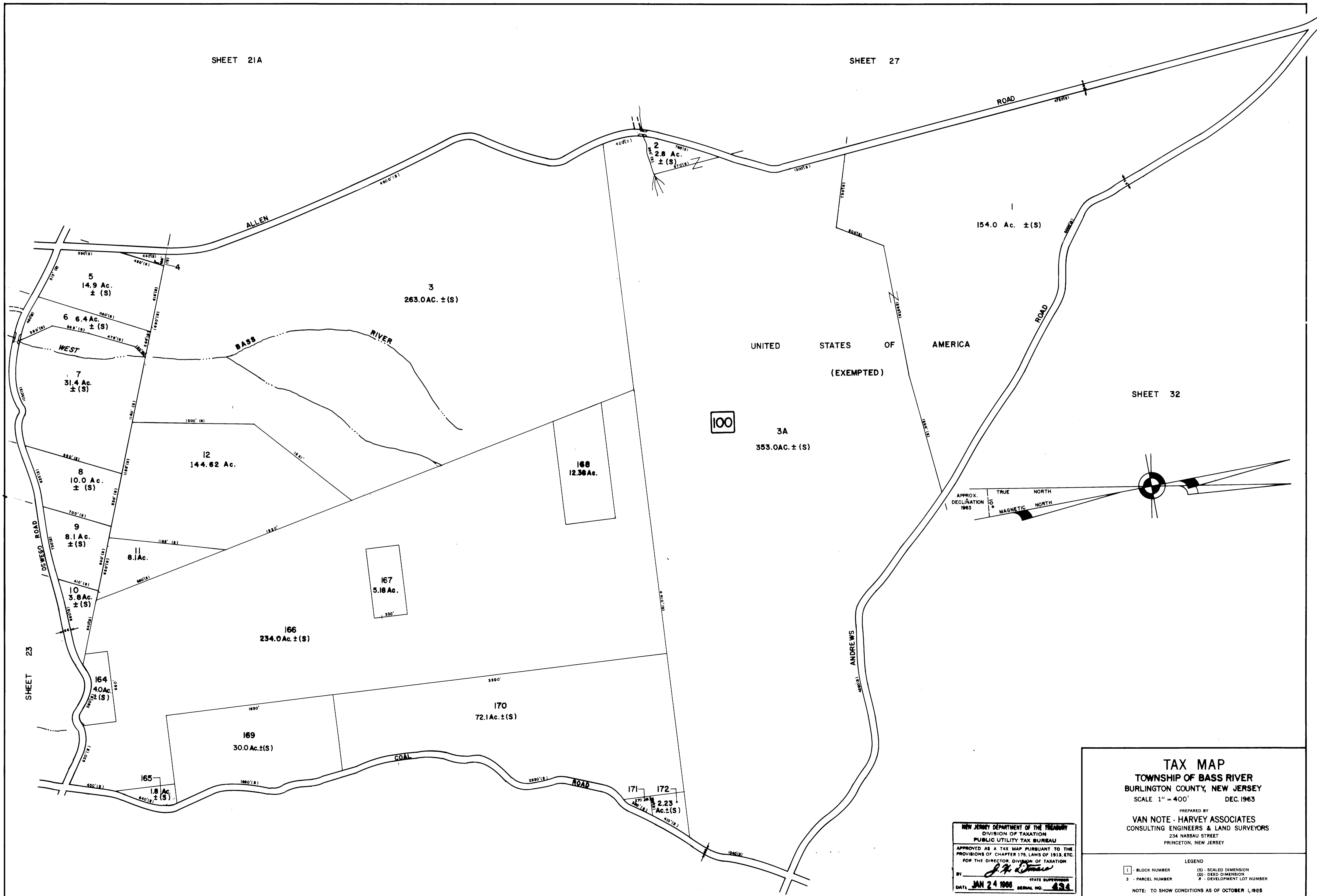


SHEET 21A

SHEET 27

SHEET 32



NEW JERSEY DEPARTMENT OF THE TREASURY  
 DIVISION OF TAXATION  
 PUBLIC UTILITY TAX BUREAU

APPROVED AS A TAX MAP PURSUANT TO THE PROVISIONS OF CHAPTER 175, LAWS OF 1913, ETC. FOR THE DIRECTOR, DIVISION OF TAXATION

BY: *J. H. [Signature]*  
 DATE: JAN 24 1968 STATE SUPERVISOR SERIAL NO. 434

**TAX MAP**  
**TOWNSHIP OF BASS RIVER**  
 BURLINGTON COUNTY, NEW JERSEY  
 SCALE 1" = 400' DEC. 1963

PREPARED BY  
**VAN NOTE - HARVEY ASSOCIATES**  
 CONSULTING ENGINEERS & LAND SURVEYORS  
 234 NASSAU STREET  
 PRINCETON, NEW JERSEY

LEGEND  
 1 - BLOCK NUMBER (S) - SCALED DIMENSION  
 3 - PARCEL NUMBER (D) - DEED DIMENSION  
 5 - DEVELOPMENT LOT NUMBER

NOTE: TO SHOW CONDITIONS AS OF OCTOBER 1, 1968