

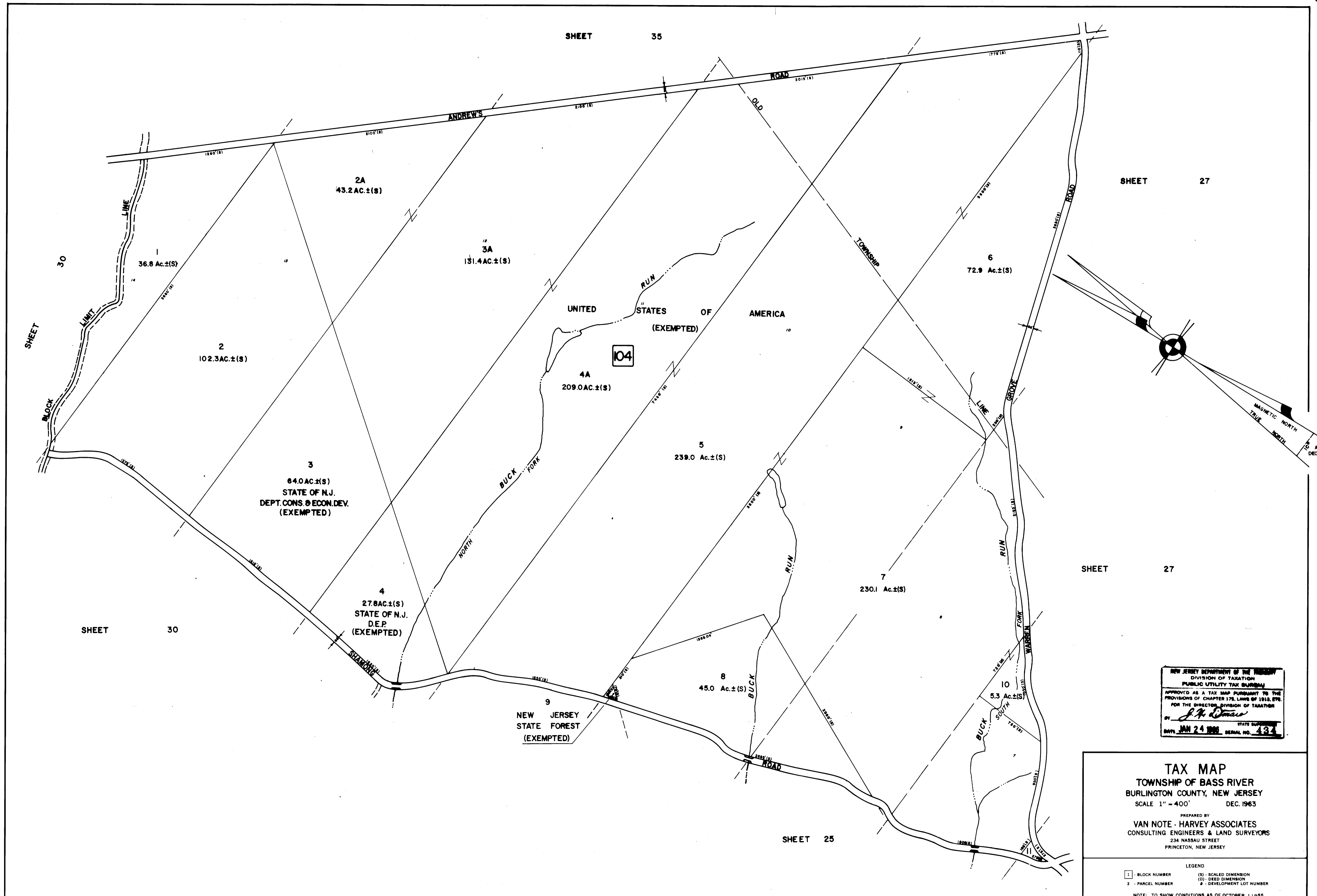
SHEET 35

SHEET 27

SHEET 27

SHEET 30

SHEET 25



NEW JERSEY DEPARTMENT OF THE TREASURY
 DIVISION OF TAXATION
 PUBLIC UTILITY TAX DIVISION
 APPROVED AS A TAX MAP PURSUANT TO THE
 PROVISIONS OF CHAPTER 172, LAWS OF 1918, ETC.
 FOR THE DIRECTOR, DIVISION OF TAXATION
 BY *J. H. O'Neil*
 DATE: JAN 24 1963 SERIAL NO. 434

TAX MAP
 TOWNSHIP OF BASS RIVER
 BURLINGTON COUNTY, NEW JERSEY
 SCALE 1" = 400' DEC. 1963

PREPARED BY
VAN NOTE - HARVEY ASSOCIATES
 CONSULTING ENGINEERS & LAND SURVEYORS
 234 NASSAU STREET
 PRINCETON, NEW JERSEY

LEGEND
 1 - BLOCK NUMBER (S) - SCALED DIMENSION
 3 - PARCEL NUMBER (D) - DEED DIMENSION
 8 - DEVELOPMENT LOT NUMBER

NOTE: TO SHOW CONDITIONS AS OF OCTOBER 1, 1965