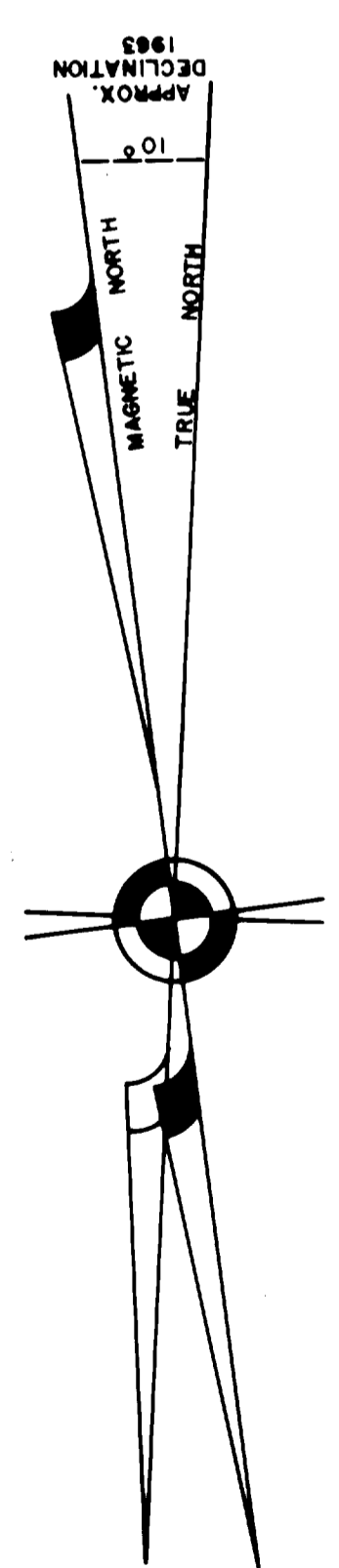
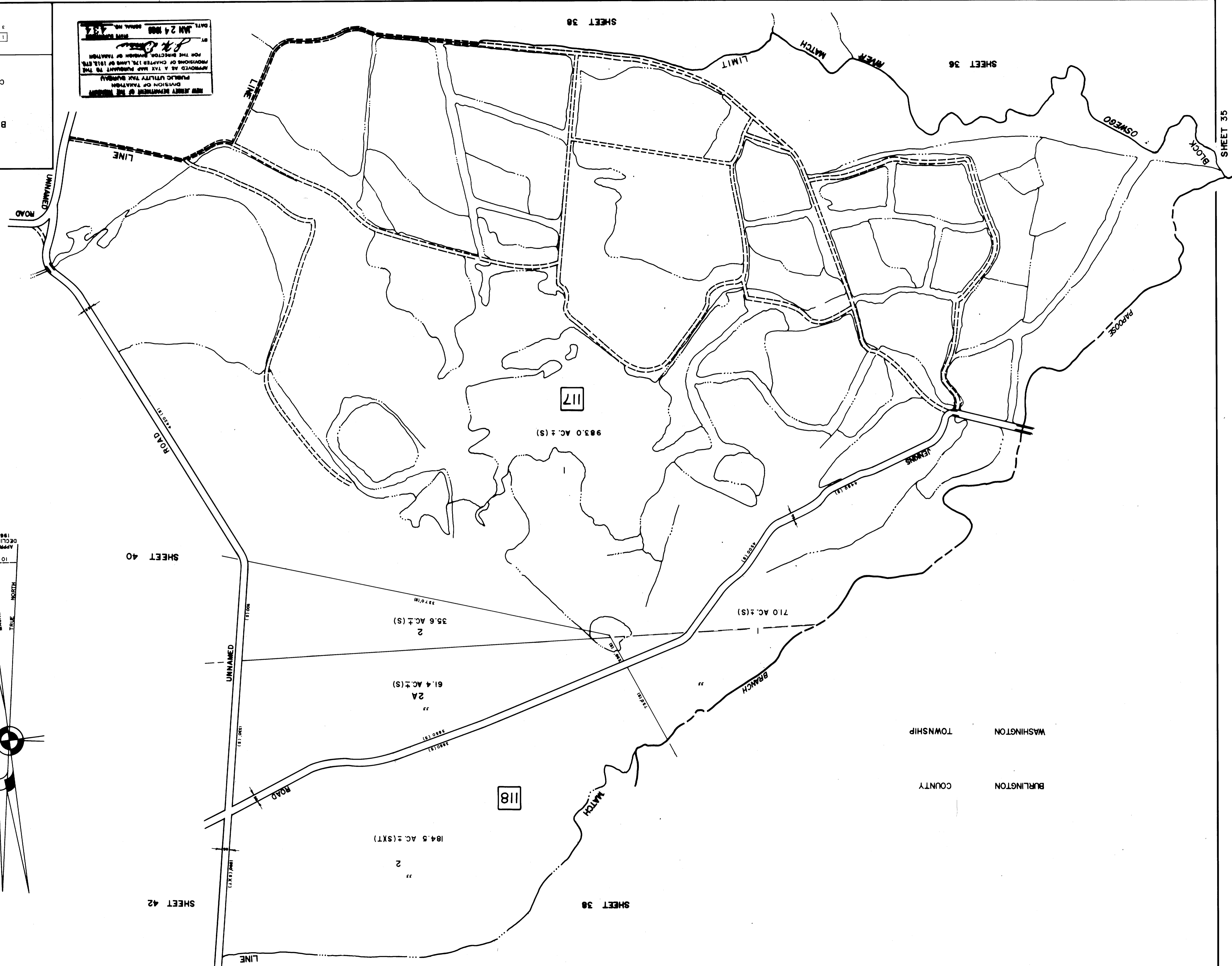


**TAX MAP**  
**TOWNSHIP OF BASS RIVER**  
**BURLINGTON COUNTY, NEW JERSEY**  
 PREPARED BY  
**VAN NOTE - HARVEY ASSOCIATES**  
 CONSULTING ENGINEERS & LAND SURVEYORS  
 224 MASSAUI STREET  
 PRINCETON, NEW JERSEY  
 SCALE 1" = 400'  
 DEC. 1963

NEW JERSEY DEPARTMENT OF TREASURY  
 DIVISION OF TAXATION  
 APPROVED AS A TAX MAP PURSUANT TO THE  
 PROVISIONS OF CHAPTER 178, LAWS OF 1952, ETC.  
 FOR THE DIRECTOR, DIVISION OF TAXATION  
 BY: *[Signature]*  
 DATE: JAN 24 1964  
 MAP NUMBER: 437

LEGEND  
 1 - BLOCK NUMBER  
 2 - PARCEL NUMBER  
 3 - SCALD DIMENSION  
 4 - DEED DIMENSION  
 5 - DEVELOPMENT LOT NUMBER  
 NOTE: TO SHOW CONDITIONS AS OF OCTOBER 1, 1963



BURLINGTON COUNTY  
 WASHINGTON TOWNSHIP