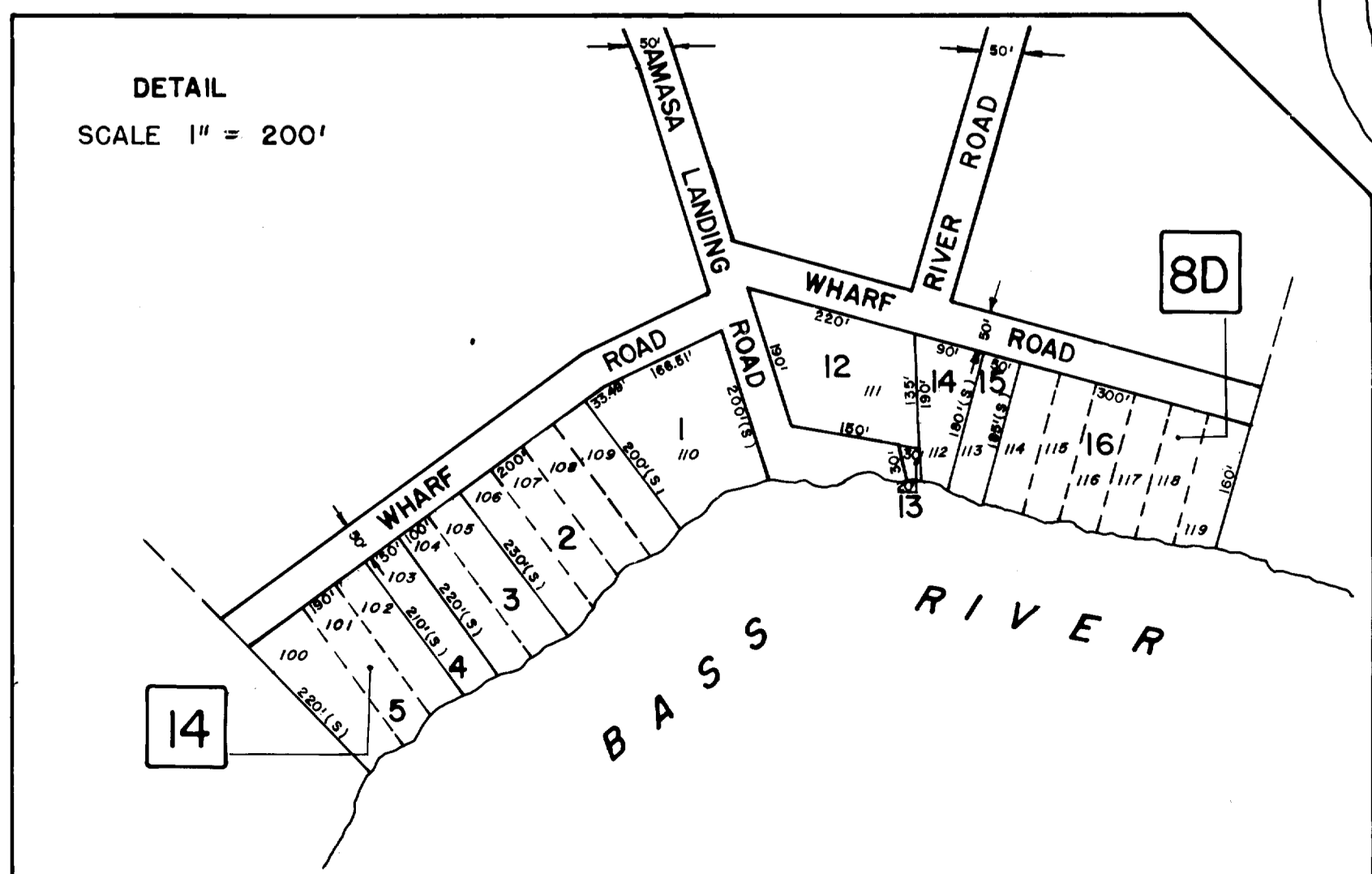
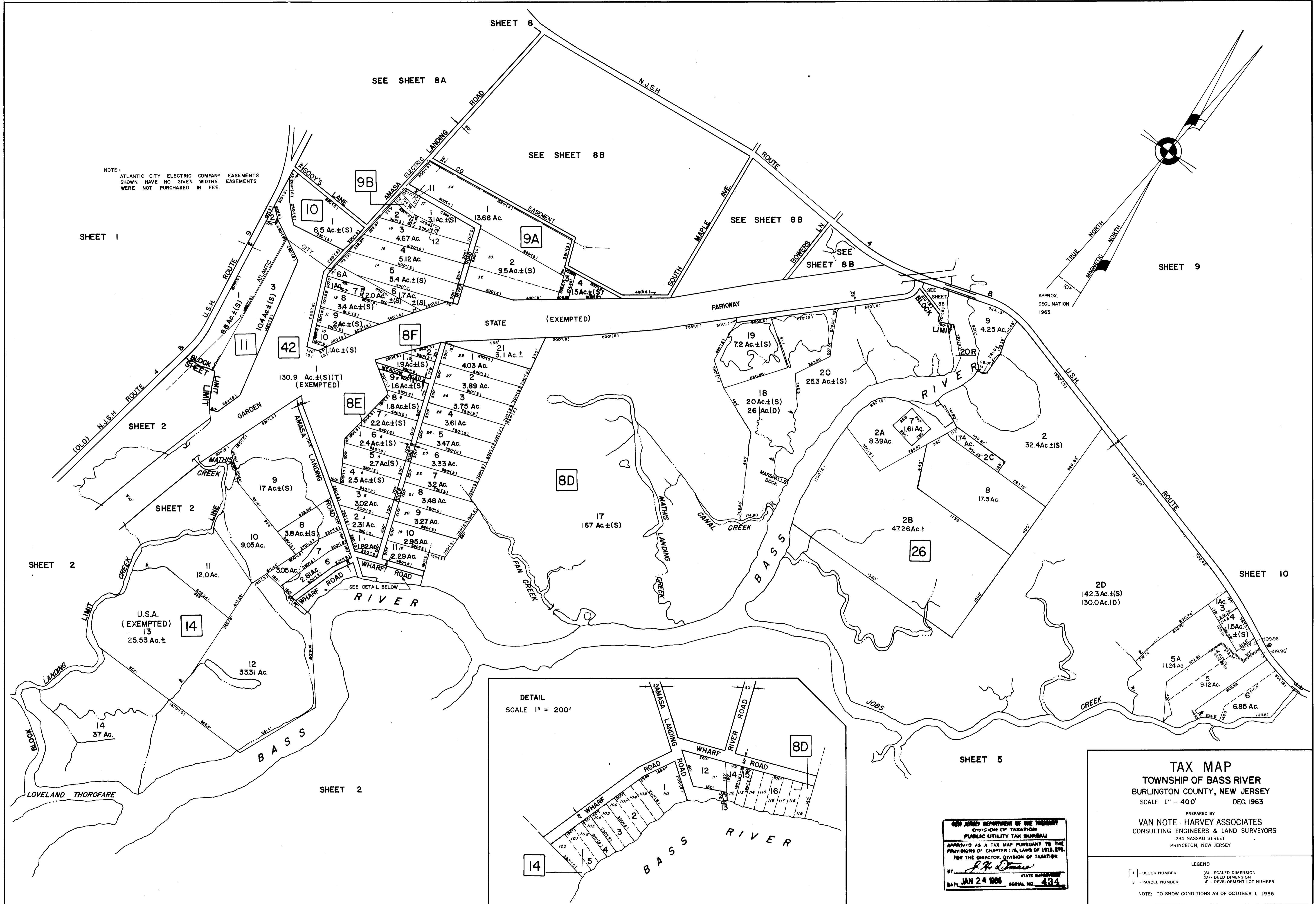


NOTE:
ATLANTIC CITY ELECTRIC COMPANY EASEMENTS
SHOWN HAVE NO GIVEN WIDTHS. EASEMENTS
WERE NOT PURCHASED IN FEE.



TAX MAP
TOWNSHIP OF BASS RIVER
BURLINGTON COUNTY, NEW JERSEY
SCALE 1" = 400' DEC. 1963

PREPARED BY
VAN NOTE - HARVEY ASSOCIATES
CONSULTING ENGINEERS & LAND SURVEYORS
234 NASSAU STREET
PRINCETON, NEW JERSEY

1 - BLOCK NUMBER	(S) - SCALED DIMENSION
3 - PARCEL NUMBER	(D) - DEED DIMENSION
	8 - DEVELOPMENT LOT NUMBER

NOTE: TO SHOW CONDITIONS AS OF OCTOBER 1, 1965

NEW JERSEY DEPARTMENT OF THE TREASURY
DIVISION OF TAXATION
PUBLIC UTILITY TAX BUREAU

APPROVED AS A TAX MAP PURSUANT TO THE
PROVISIONS OF CHAPTER 175, LAWS OF 1918, ETC.
FOR THE DIRECTOR, DIVISION OF TAXATION

BY *J. H. Omer* STATE SUPERVISOR
DATE: JAN 24 1966 SERIAL NO. 434