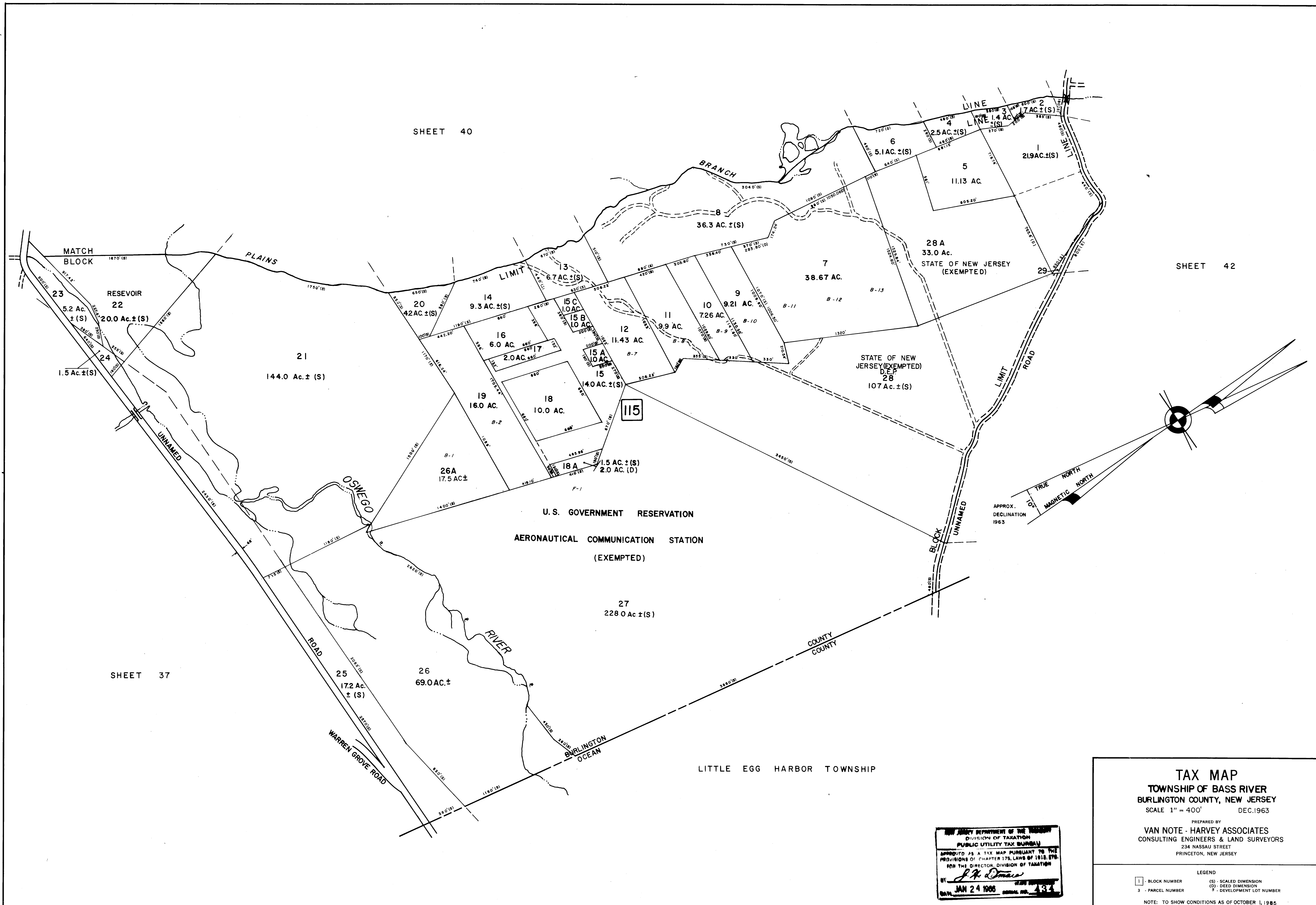


SHEET 40

SHEET 42



SHEET 37

LITTLE EGG HARBOR TOWNSHIP

**TAX MAP**  
**TOWNSHIP OF BASS RIVER**  
 BURLINGTON COUNTY, NEW JERSEY  
 SCALE 1" = 400' DEC. 1963

PREPARED BY  
**VAN NOTE - HARVEY ASSOCIATES**  
 CONSULTING ENGINEERS & LAND SURVEYORS  
 234 NASSAU STREET  
 PRINCETON, NEW JERSEY

LEGEND  
 1 - BLOCK NUMBER (S) - SCALED DIMENSION  
 3 - PARCEL NUMBER (D) - DEED DIMENSION  
 9 - DEVELOPMENT LOT NUMBER

NOTE: TO SHOW CONDITIONS AS OF OCTOBER 1, 1965

NEW JERSEY DEPARTMENT OF THE TREASURY  
 DIVISION OF TAXATION  
 PUBLIC UTILITY TAX BUREAU  
 APPROVED AS A TAX MAP PURSUANT TO THE  
 PROVISIONS OF CHAPTER 175, LAWS OF 1918, ETC.  
 FOR THE DIRECTOR, DIVISION OF TAXATION  
*J. H. [Signature]*  
 JAN 24 1966