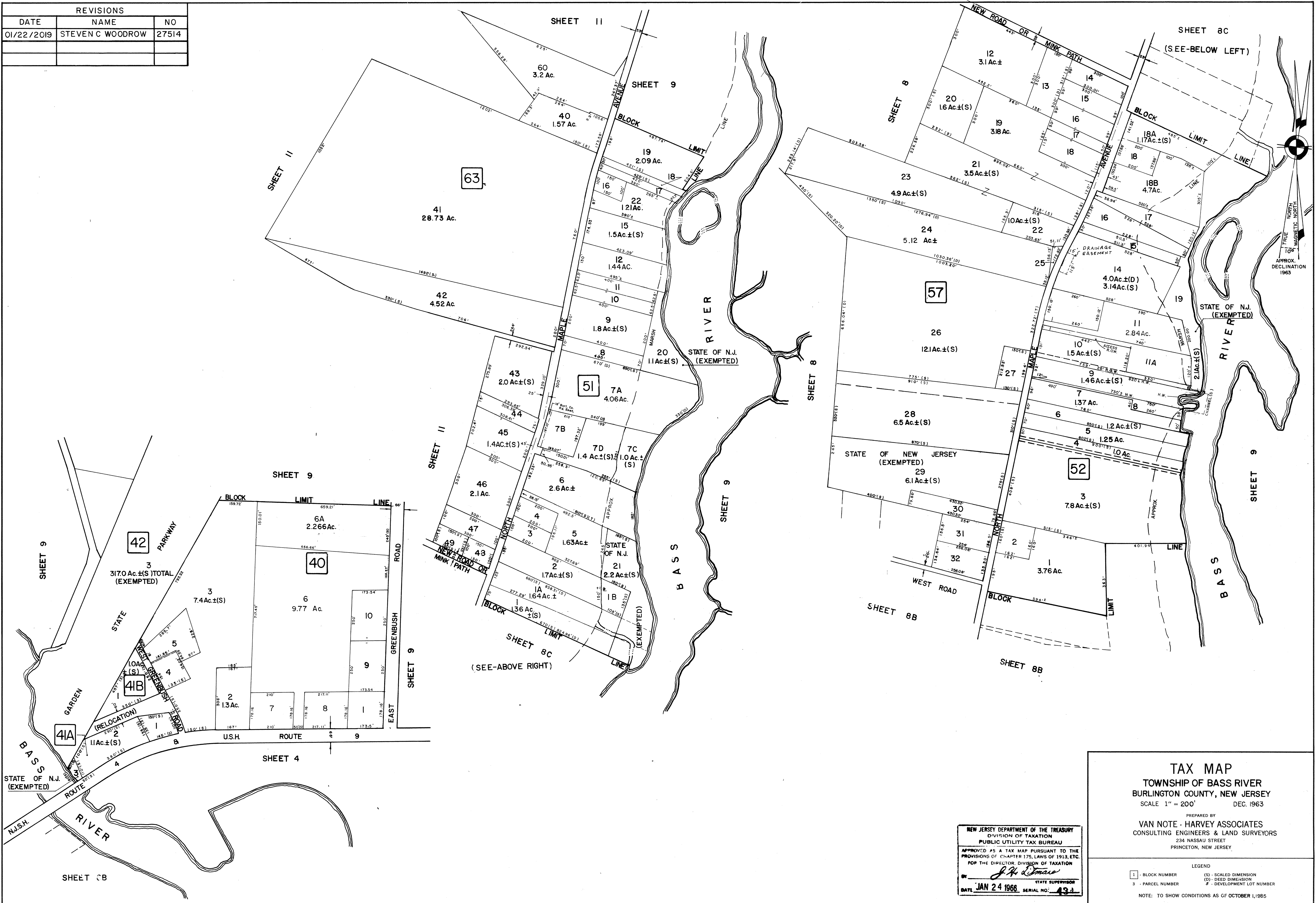


REVISIONS		
DATE	NAME	NO
01/22/2019	STEVEN C WOODROW	27514



TAX MAP
TOWNSHIP OF BASS RIVER
BURLINGTON COUNTY, NEW JERSEY
 SCALE 1" = 200' DEC. 1963

PREPARED BY
VAN NOTE - HARVEY ASSOCIATES
 CONSULTING ENGINEERS & LAND SURVEYORS
 234 NASSAU STREET
 PRINCETON, NEW JERSEY

NEW JERSEY DEPARTMENT OF THE TREASURY
 DIVISION OF TAXATION
 PUBLIC UTILITY TAX BUREAU

APPROVED AS A TAX MAP PURSUANT TO THE
 PROVISIONS OF CHAPTER 175, LAWS OF 1913, ETC.
 FOR THE DIRECTOR, DIVISION OF TAXATION

DATE **JAN 24 1966** SERIAL NO. **431**

LEGEND
 1 - BLOCK NUMBER (S) - SCALED DIMENSION
 2 - PARCEL NUMBER (D) - DEED DIMENSION
 3 - DEVELOPMENT LOT NUMBER

NOTE: TO SHOW CONDITIONS AS OF OCTOBER 1, 1965