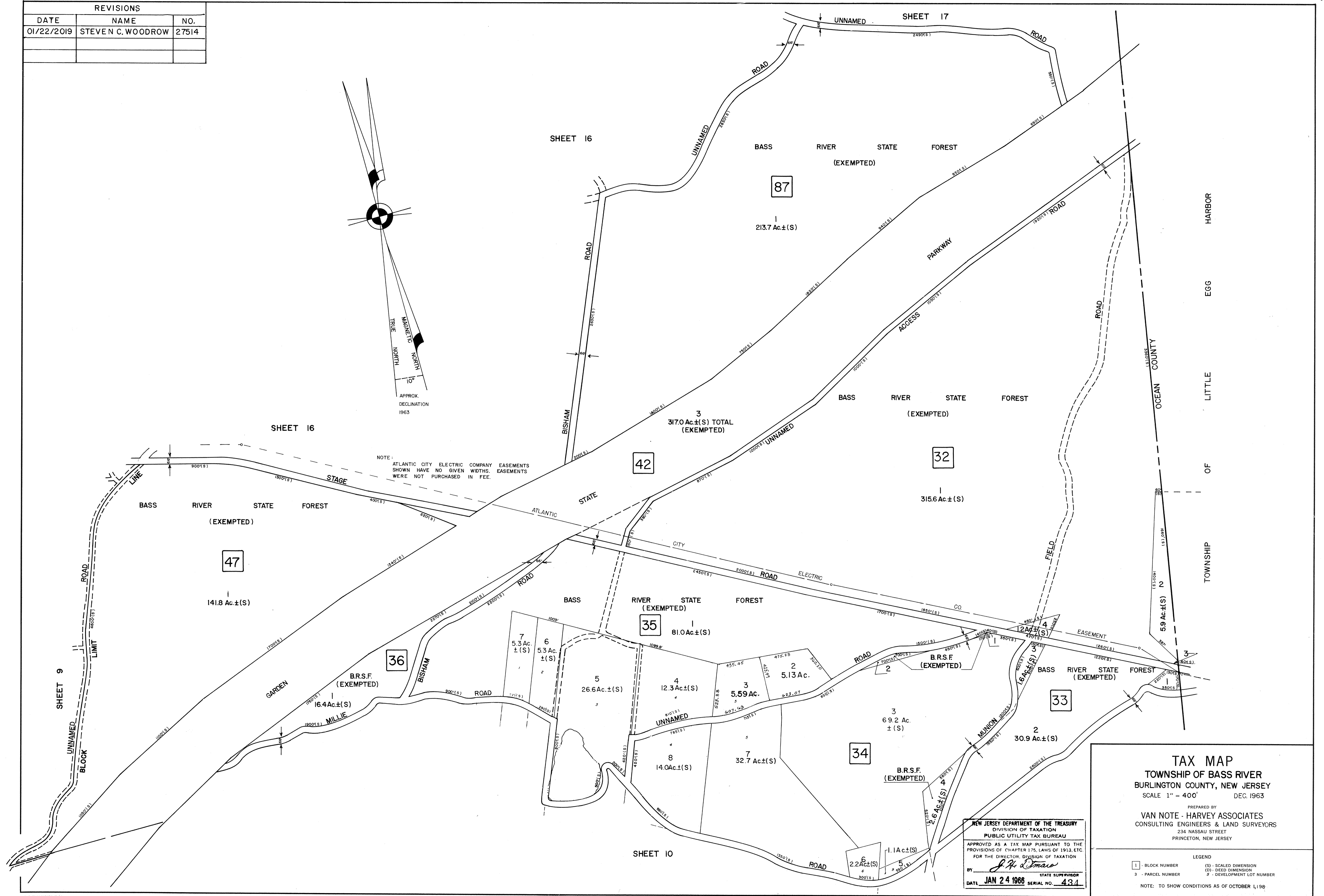


REVISIONS		
DATE	NAME	NO.
01/22/2019	STEVEN C. WOODROW	27514



**TAX MAP**  
**TOWNSHIP OF BASS RIVER**  
 BURLINGTON COUNTY, NEW JERSEY  
 SCALE 1" = 400' DEC. 1963  
 PREPARED BY  
**VAN NOTE - HARVEY ASSOCIATES**  
 CONSULTING ENGINEERS & LAND SURVEYORS  
 234 NASSAU STREET  
 PRINCETON, NEW JERSEY

NEW JERSEY DEPARTMENT OF THE TREASURY  
 DIVISION OF TAXATION  
 PUBLIC UTILITY TAX BUREAU  
 APPROVED AS A TAX MAP PURSUANT TO THE  
 PROVISIONS OF CHAPTER 175, LAWS OF 1913, ETC.  
 FOR THE DIRECTOR, DIVISION OF TAXATION  
 BY *J. H. [Signature]*  
 STATE SUPERVISOR  
 DATE **JAN 24 1966** SERIAL NO. **434**

LEGEND  
 1 - BLOCK NUMBER (S) - SCALED DIMENSION  
 2 - PARCEL NUMBER (D) - DEED DIMENSION  
 3 - DEVELOPMENT LOT NUMBER  
 NOTE: TO SHOW CONDITIONS AS OF OCTOBER 1, 1963